

The Basics of Reading Music

WORKBOOK ANSWERS

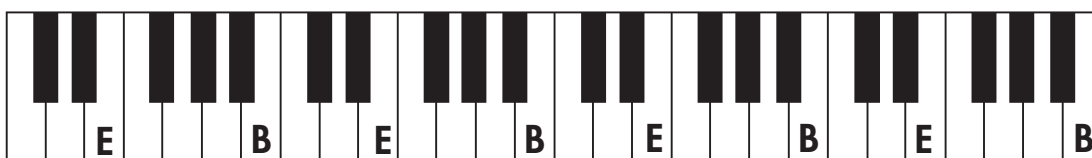
Write the letters C and G on all of the appropriate keys of this piano diagram.



Write the letters A, D, and F on all of the appropriate keys of this piano diagram.



Write the letters B and E on all of the appropriate keys of this piano diagram.



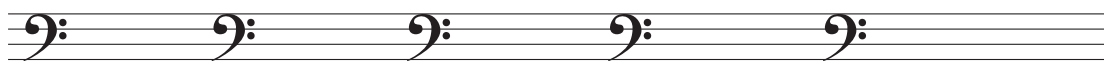
Add stems to these noteheads. Make sure that the stems are drawn in the correct direction.



Draw at least five treble clefs on this staff.



Draw at least five bass clefs on this staff.



Name the following notes using letters of the musical alphabet.



E A G D B D F C G F E C



D B G C A A F C E F D A



C A B F D B C G D G A E



F E D B A D C F G C E G



D A F C D E G D B G A D



B E C B F D A G E C A D



A B D C A D F C G A C E



G A E F C D F B E C E E

Write the following notes, being careful to notice whether a line or space note is indicated. Use whole notes and add the accidental to the note in the correct place.

G \flat line C \sharp space E \sharp space B \flat line F \sharp space E \flat line

A \sharp line C \sharp space G \flat space B \flat line E \sharp space G \flat line

Write the following ledger line notes above or below the staff as indicated.

Above the staff

A line C line F space D space B space E line

Below the staff

Middle C G space A line B space F line E space

Above the staff

D space F space E line A space G line Middle C

Below the staff

C line B space G space E line D space A line

Write the following pitches as they actually sound.

In the blank measure following each given note, write a ledger-line note on the opposite staff that is equivalent to the given note. The note you write should sound exactly the same as the starting pitch.

Write an enharmonic name for each of these pitches.

F E# B Cb G# Ab Db C#
 C B# E Fb Bb A# A# Bb

On the staves below, circle the pairs of notes that are a half step apart.